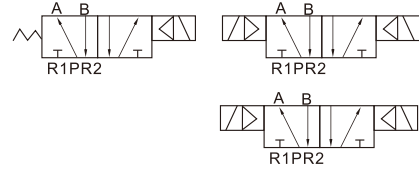


## Solenoid valve MVSC series

Symbol:



MVSC-220-4E1

### How to order

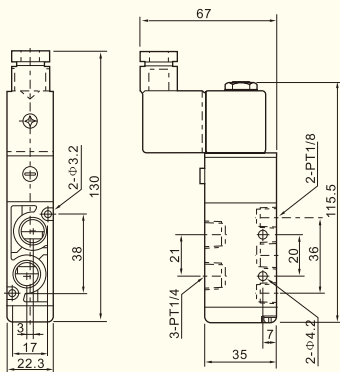
MVSC	220	-	4E2	C	AC110V
Series code	Body size 22mm		Coil 4E1:single coil 4E2:double coil	Position Nil:two position C:three position, midst close type P:three position, midst exhaust type R:three position, midst pressure type	Voltage DC12V DC24V AC24V50/60Hz AC110V50/60Hz AC220V50/60Hz AC380V50/60Hz

### Specification

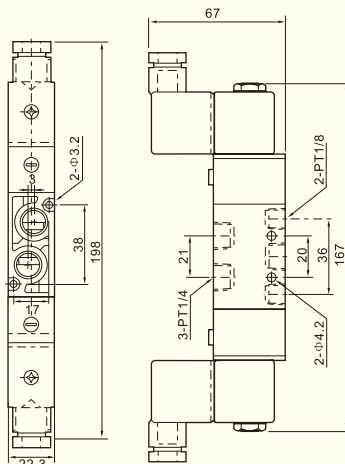
Model	MVSC-220-4E1	MVSC-220-4E2	MVSC-220-4E2C	MVSC-220-4E2P	MVSC-220-4E2R
Fluid	Air(filtered through 40 μ filter element)				
Action	Internally piloted acting type				
Valve type	2/5 Way		3/5 Way		
Effective area(mm <sup>2</sup> )	14mm <sup>2</sup> (CV=0.78)		12mm <sup>2</sup> (CV=0.4)		
Port size					
Lubrication	Not required				
Operating pressure	1.5~8.0kgf/cm <sup>2</sup>				
Proof pressure	10.5kgf/cm <sup>2</sup>				
Ambient & fluid temperature	5~60℃				
Voltage range	± 10%				
Power consumption	AC:4.5W DC:3.0W				
Insulation grade	F grade				
Protection	IP65(DIN 40050)				
Connection	Lead wire type or terminal type				
Max.frequency	5 cycle/sec.				
Min.response time	0.05 sec.				
Weight (kg)					
Main parts material	Body	Aluminum alloy			
	Seal	NBR			

### Dimension

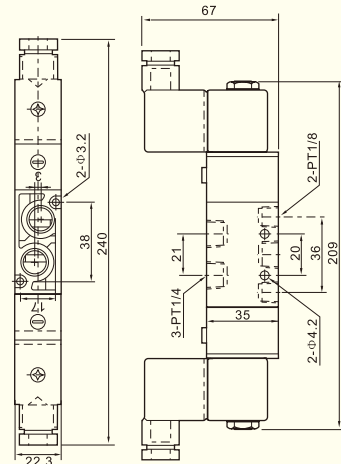
MVSC-220-4E1



MVSC-220-4E2

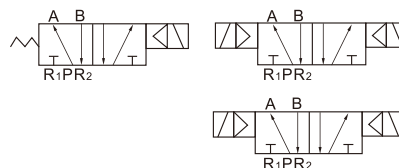


MVSC-220-4E2C



## Solenoid valve MVSC series

Symbol:



MVSC-260-4E1

### How to order

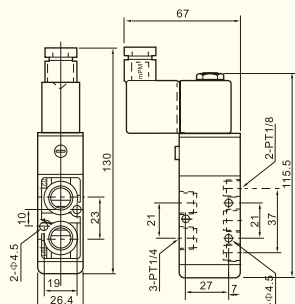
MVSC	260	-	4E2	C	AC110V
Series code	Body size 26mm		Coil 4E1:single coil 4E2:double coil	Position Nil:two position C:three position, midst close type P:three position, midst exhaust type R:three position, midst pressure type	Voltage DC12V DC24V AC24V 50/60Hz AC110V 50/60Hz AC220V 50/60Hz AC380V 50/60Hz

### Specification

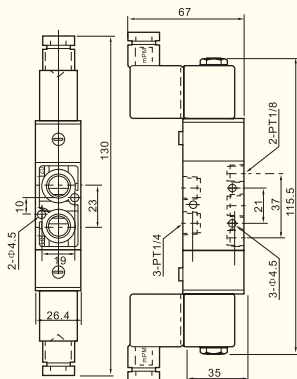
Model	MVSC-260-4E1	MVSC-260-4E2	MVSC-260-4E2C	MVSC-260-4E2P	MVSC-260-4E2R
Fluid	Air(filtered through 40 μ filter element)				
Action	Internally piloted acting type				
Valve type	2/5 Way		3/5 Way		
Effective area(mm <sup>2</sup> )	25mm <sup>2</sup> (CV=1.4)		18mm <sup>2</sup> (CV=1.0)		
Port size					
Lubrication	Not required				
Operating pressure	1.5~8.0kgf/cm <sup>2</sup>				
Proof pressure	10.5kg/cm <sup>2</sup>				
Ambient & fluid temperature	5~60°C				
Voltage range	±10%				
Power consumption	AC:4.5W DC:3.0W				
Insulation grade	F grade				
Protection	IP65(DIN 40050)				
Connection	Lead wire type or terminal type				
Max.frequency	5 cycle/sec.				
Min.response time	0.05 sec.				
Weight (kg)					
Main parts material	Body		Aluminum alloy		
	Seal		NBR		

### Dimension

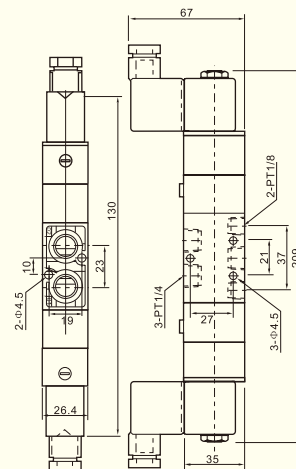
MVSC-260-4E1



MVSC-260-4E2

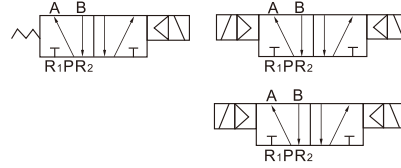


MVSC-260-4E2C



## Solenoid valve MVSC series

Symbol:



MVSC-300-4E1

### How to order

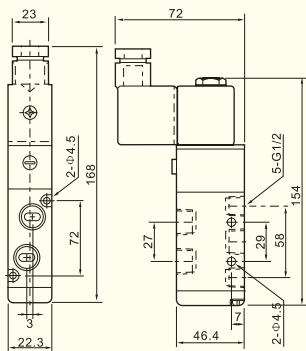
MVSC	300	-	4E2	C	AC110V
Series code	Body size	Coil	Position	Voltage	
		4E1:single coil 4E2:double coil	Nil:two position C:three position, midst close type P:three position, midst exhaust type R:three position, midst pressure type	DC12V DC24V AC24V 50/60Hz AC110V 50/60Hz AC220V 50/60Hz AC380V 50/60Hz	

### Specification

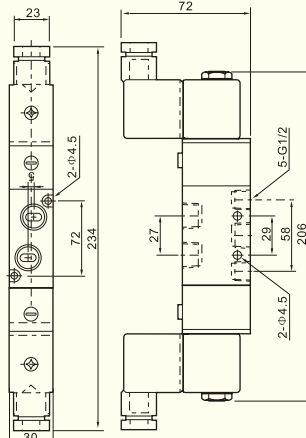
Model	MVSC-300-4E1	MVSC-300-4E2	MVSC-300-4E2C	MVSC-300-4E2P	MVSC-300-4E2R
Fluid	Air(filtered through 40 μ filter element)				
Action	Internally piloted acting type				
Valve type	2/5 Way		3/5 Way		
Effective area(mm <sup>2</sup> )	50mm <sup>2</sup> (CV=2.79)		30mm <sup>2</sup> (CV=1.68)		
Port size					
Lubrication	Not required				
Operating pressure	1.5~8.0kgf/cm <sup>2</sup>				
Proof pressure	10.5kg/cm <sup>2</sup>				
Ambient & fluid temperature	5~60℃				
Voltage range	± 10%				
Power consumption	AC:4.5W DC:3.0W				
Insulation grade	F grade				
Protection	IP65(DIN 40050)				
Connection	Lead wire type or terminal type				
Max.frequency	5 cycle/sec.				
Min.response time	0.05 sec.				
Weight (kg)					
Main parts material	Body	Aluminum alloy			
	Seal	NBR			

### Dimension

MVSC-300-4E1



MVSC-300-4E2



MVSC-300-4E2C

